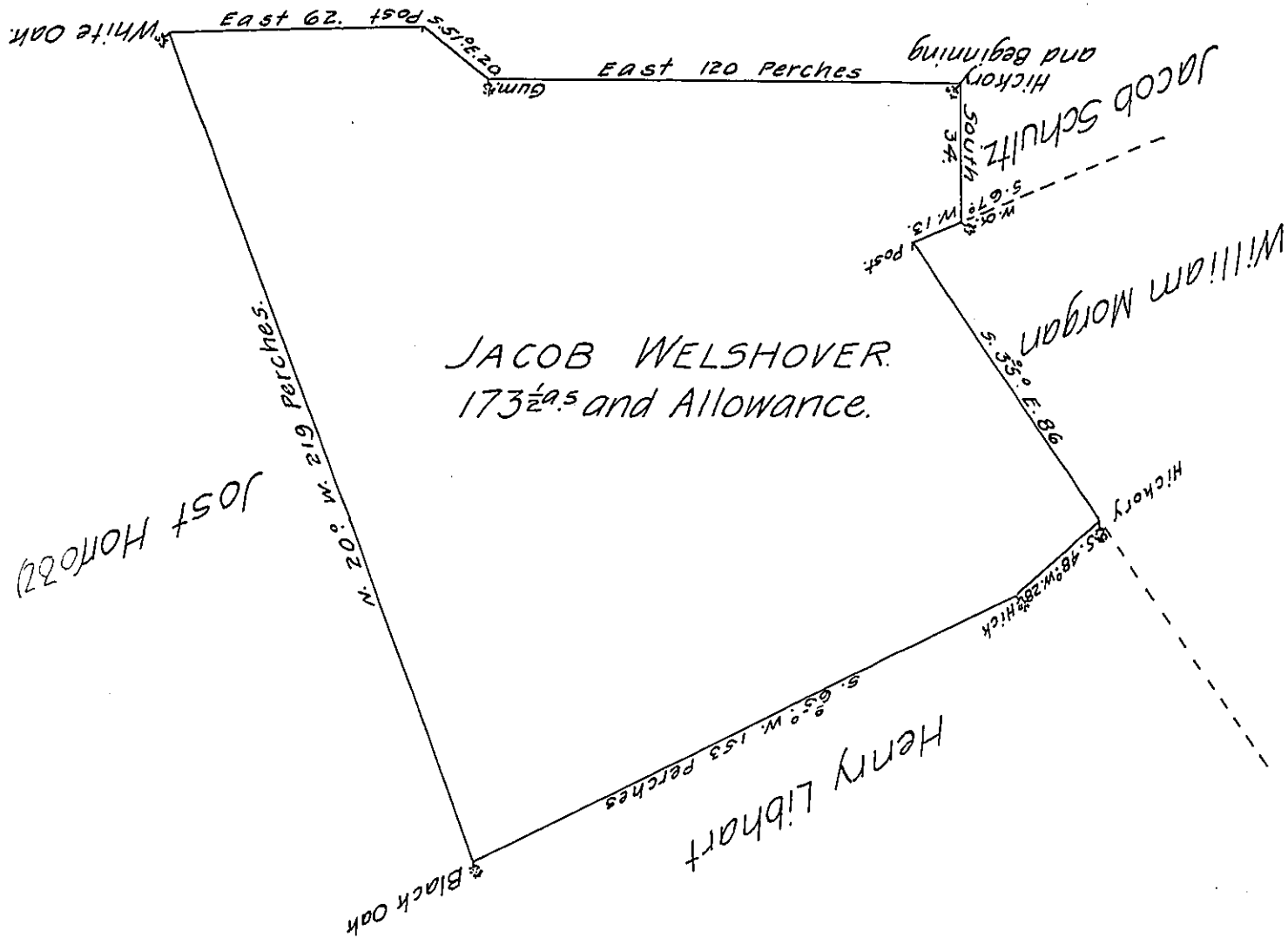


Martin Schultz



A Draught of a Tract of Land Situate in Hallam (o-b-l)ship, within the Mannor of Springetsbury, in the County of York (o-b-l) Part of the County of Lancaster) containing one hundred and (o-b-l)three Acres and an half and the Allowance of Six Acres & Cent, (o-b-l) Roads and Highway; Surveyed the 17th day of October 1759 for (o-b-l)Welshover in pursuance of a Grant from the Honourable Tho, (o-b-l)Penn, Esquire, one of the Proprietaries bearing date the 30th (o-b-l)October 1736. The Right whereof is now vested in Jacob Wels (o-b-l) the Son.

Geo. Stevenson, (o-b-l)

To Nicholas Scull, Esqr: Surv^r: Gen^l:

IN TESTIMONY that the above is a copy of the original remaining on file in the Department of Internal Affairs of Pennsylvania, made conformably to an Act of Assembly approved the 16th day of February 1833, I have hereunto set my hand and caused the Seal of said Department to be affixed at Harrisburg, this twenty-seventh day of March 1907.

Joseph P. Brown
Secretary of Internal Affairs.